



# GAT MONTHLY MEMBERSHIP PROGRESS REPORT

Results as of: 2/29/2024

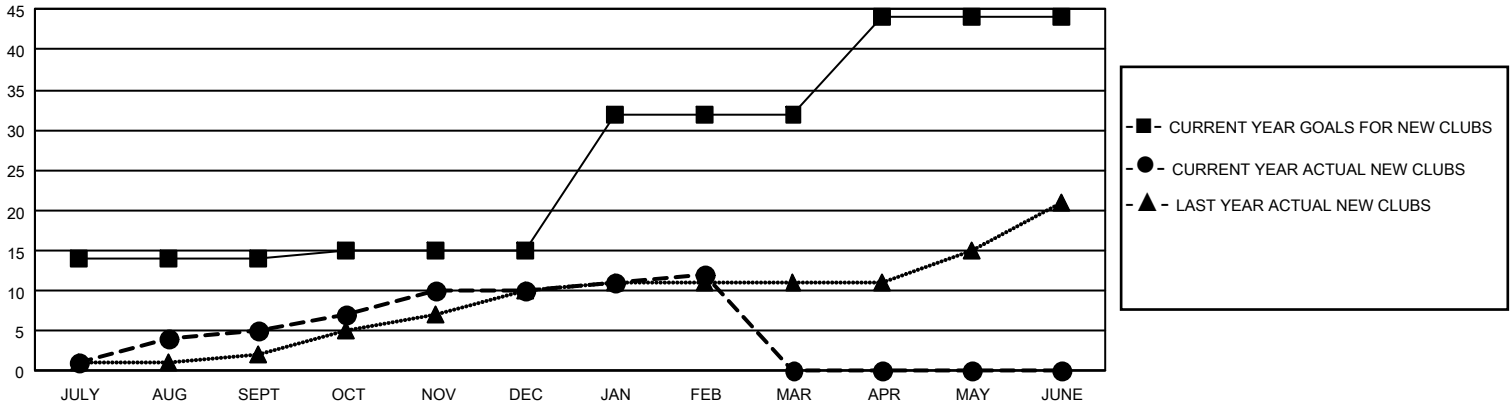
## GMT Constitutional Area 3, Group C

REPORT DOES NOT INCLUDE CLUBS IN UNDISTRICTED AREAS.

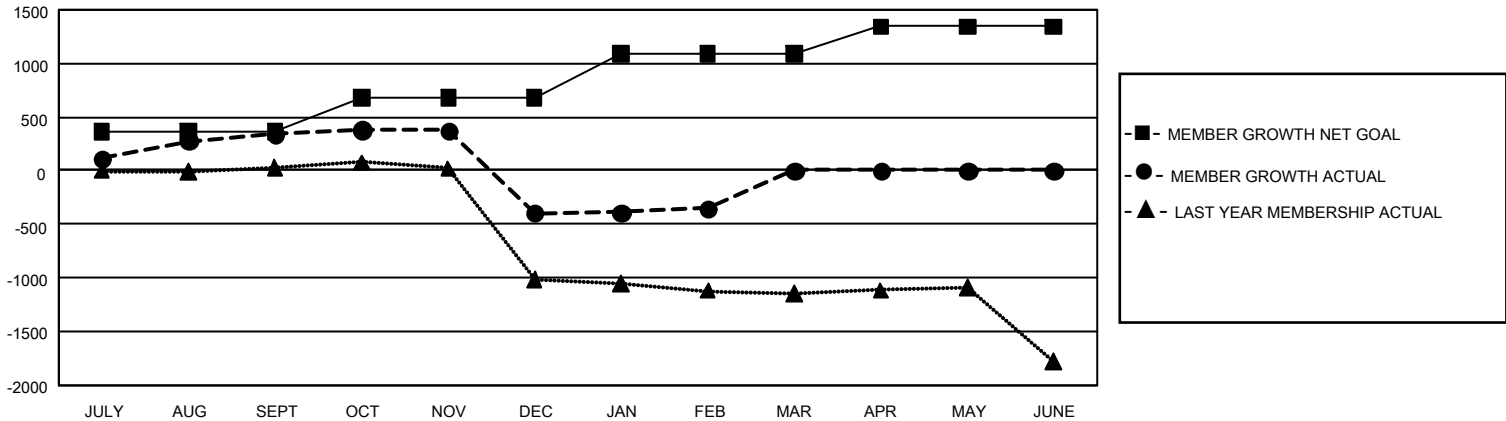
Clubs			
RESULTS FOR 2023-2024			
QUARTER	NEW CLUB GOAL	NEW CLUBS	DROPPED CLUBS
JULY/AUG/SEPT	42	5	4
OCT/NOV/DEC	3	5	20
JAN/FEB/MAR	51	2	6
APR/MAY/JUNE	36	0	0

Members			
RESULTS FOR 2023-2024			
QUARTER	MEMBER GROWTH NET GOAL	MEMBER GROWTH ACTUAL	DROPPED MEMBERS ACTUAL (including transfers)
JULY/AUG/SEPT	361	754	296
OCT/NOV/DEC	315	497	1,169
JAN/FEB/MAR	416	398	278
APR/MAY/JUNE	252	0	0

GOALS AND ACTUAL NEW CLUBS CUMULATIVE



GOALS AND ACTUAL MEMBERS CUMULATIVE



DROPPED CLUBS: 30	322 CLUBS OF 804 ADDED 1 OR MORE NEW MEMBERS	<u>GENDER DISTRIBUTION</u>	
<u>DROPPED MEMBERS</u>		MALE	7,864 (48.95%)
DECEASED	87	FEMALE	8,195 (51.01%)
CLUB CANCELLED	349	NON BINARY	0 (0.00%)
OTHER	1,307	PREFER NOT TO ANSWER	5 (0.03%)
TOTAL	1,743	TOTAL FAMILY UNIT MEMBERS	6,518
	<a href="#">CLICK HERE FOR CUMULATIVE MEMBERSHIP DATA</a>	FAMILY MEMBERS PAYING HALF DUES	3,896